



**Branford**  
Early Childhood  
Collaborative

Children's  
Resource  
Guide

JANUARY 2020

*Grow with us--because the early years, matter.*

A RESOURCE GUIDE FOR BRANFORD FAMILIES

WWW.BRANFORDBECC.ORG  
203-415-523

## **Who Are We?**

The Branford Early Childhood Collaborative (BECC) is a non-profit organization that supports families, young children, caregivers and teachers. Our mission is *to ensure that all Branford children and families are given the opportunity to develop a sound foundation for learning in the critical early years.*

## **What Do We Do?**

We provide professional development and learning opportunities for early care professionals in Branford and learning experiences for families. Our initiatives include:

- >> Children's Resource Guide
- >> Monthly Early Care Provider Professional Development
- >> Week of the Young Child and other literacy resources & events
- >> Preschool Expo
- >> Programs supporting expecting and new mothers
- >> Parent education & advocacy
- >> Branford Healthy Smiles Dental Education
- >> Community Conversations
- >> Advocacy on local, state-wide and national issues

## **How We Help!**

We are the hub that connects families and caregivers to information to support the healthy development of children.

- >> Supporting infants, toddlers and their families with information
- >> Connecting parents to community services and programs
- >> Advancing proficiencies of our local caregivers
- >> Empowering civic engagement and advocacy

Questions? Reach out, get involved, or contact us for more information.  
203.415.5237 or [Branford.becc@gmail.com](mailto:Branford.becc@gmail.com)

## **Branford Early Childhood Collaborative**

*Connecting children, families & community for nearly 20 years.*

**Grow with us...because the early years matter.**

## TABLE OF CONTENTS

Emergency & Resource Phone Numbers.....	3
Hospitals.....	3
Family Health & Educational Support.....	4
Supportive Mental Health.....	14
Child Care, Preschool & Afterschool Programs .....	16
Licensed Family Day Care.....	21
Playgroups, Enrichment and Home Visiting.....	23
After School Programs.....	24
Financial Assistance.....	25
Dental.....	27
Nutrition.....	30
Vision Care .....	31
Pediatricians.....	32
Education .....	32
Houses of Worship.....	35
Libraries .....	36
Literacy Programs/Language Assistance/Adult Ed .....	36
Homeschooling .....	38
Recreation & Entertainment.....	40
Parks and Playgrounds.....	43
Walking Trails .....	44
Sporting Teams .....	44
Community Services/Volunteer Opportunities.....	45
Summer Camps.....	47
Support Groups.....	48

**An online version of this Children’s Resource Guide, in both English and Spanish, can be found at [BranfordBECC.org](http://BranfordBECC.org)**

**\*To submit a resource to the current electronic version or have it included in future hard copy editions, please write to [branford.becc@gmail.com](mailto:branford.becc@gmail.com) or call the office at 203.415.5237.**

***A special thank you to the Community Foundation for Greater New Haven for making this guide available in printed format and in Spanish.***

## **EMERGENCY PHONE NUMBERS & HELPFUL RESOURCES**

<b>Medical, Fire, Police</b>	<b>911</b>
Ambulance	203.481.8200
Branford Town Hall	203.488.8394
Care4Kids	1.888.214.KIDS
Child Car Safety Seat Inspections	203.453.8061
Child Abuse & Neglect Hotline (DCF)	1.800.842.2288
Domestic Violence Hotline	203.789.8104
Fire Department	203.488.7266
State of CT Immigration Services	800-375-5283
Immigrant Advocacy - Unidad Latina en Accion (ULA)	203-606-3484
Poison Control Center	1.800.222.1222
Police Department	203.481.4241
School Transportation	203.488.6186
Suicide Prevention Hotline	2-1-1
Suicide Crisis Text Line	741741
Youth Police Officer	203.481.4241
Shoreline Chamber of Commerce	203.488.5500
Youth Outreach Worker (24-hour service)	203.481.4248

### **HOSPITALS**

<b>Yale New Haven Hospital Health Systems</b>	203.688.2000
<b>Children's Hospital</b>	203.688.4177
20 York Street, New Haven, CT 06510	203.688.4242

[www.ynnh.org](http://www.ynnh.org)

<b>Saint Raphael Campus</b>	203.789.3000
1450 Chapel Street New Haven, CT 06511	

[www.ynhh.org/src](http://www.ynhh.org/src)

<b>Yale New Haven Shoreline Medical Center</b>	203.453.7123
111 Goose Lane Guilford, CT 06437 (Emergency)	

[www.ynhh.org/medical-services/shoreline-medical-center.aspx](http://www.ynhh.org/medical-services/shoreline-medical-center.aspx)

<b>OrthoNow - Walk-in Orthopedics</b>	203.407.3550
84 North Main Street Branford, CT 06405	<a href="http://www.ct-ortho.com">www.ct-ortho.com</a>

<b>Stony Creek Urgent Care – Walk-in Urgent Care</b>	203.483.4580
6 Business Park Drive Branford, CT 06405	
<a href="http://www.stonycreekurgentcare.com">www.stonycreekurgentcare.com</a>	

## **FAMILY HEALTH & EDUCATIONAL SUPPORT**

**Autism Services and Resources Connecticut (ASRC)** 203.265.7717

101 North Plains Industrial Road Harvest Park,  
Building 1A Wallingford, CT 06492

*The ASRC is a non-profit organization serving individuals with autism spectrum disorders, their family members, and the professionals who work with them. Providing a variety of services including family support, training opportunities for parents & professionals, development of new resources, advocacy training, sibling support, community awareness, a comprehensive education network, & education around important legislative issues.*

<http://www.ct-asrc.org/>

**Branford Early Childhood Collaborative (BECC)** 203.415.5237

P.O. Box 1032 Branford, CT 06405

Office: Trinity Church 1109 Main Street white house behind church

*A resource for Branford licensed caregivers, providing early care professional trainings, resources & referrals for parents. Empowering parents to be advocates for & active participants in, their children's overall health & well-being. Contact us to learn more.*

[www.branfordbecc.org](http://www.branfordbecc.org)

**Branford Family Resource Center** 203.315.3799

Location: Indian Neck School, 12 Melrose Avenue Branford CT

*Located at Indian Neck School, the Branford Family Resource Center promotes integrated, community-based systems of family support and child development services. Providing up-to-date resources for families and Branford residents looking for support services. The seven components of the FRC are: resource and referral, early care and education, adult education and family literacy, support and training for home care providers, positive youth development, families in training, collaborates with school age child care. [www.indianneck.org](http://www.indianneck.org)*

**Bureau of Education and Services for the Blind** 860.602.4000

184 Windsor Avenue Windsor, CT 06095

Open weekdays 8:00 a.m. – 4:00 p.m.

*The goal at BESB is to provide effective and efficient services that result in better opportunities, independence and community access for people who experience significant visual loss. The agency offers comprehensive*

## **FAMILY HEALTH & EDUCATIONAL SUPPORT (CON'T)**

*services that are customized to each consumer's specific situation. Rehabilitation professionals are available to come to homes, schools and places of employment of consumers, delivering specialized independent living, educational and vocational training. In addition, the agency Business Enterprises Program offers a unique opportunity for people who are blind to become entrepreneurs. [www.ct.gov/BESB](http://www.ct.gov/BESB)*

### **Child Development Infoline & Pregnancy Support** 1.800.505.7000

*For questions or concerns about your child's health, development or behavior. CDI is a specialized unit of the United Way of Connecticut. Care coordinators are available to answer the phone Monday through Friday from 8:00am-6:00pm, except on holidays. Message can be left 24 hours a day, seven days a week, and are returned promptly. This service is free and confidential, with multi-lingual and TTY capacity.*

[www.cdi.211ct.org](http://www.cdi.211ct.org)

### **CT Department of Social Services** 1.855.626.6632

*The Department of Social Services (DSS) delivers a wide variety of services to children, families, adults, people with disabilities and the elderly, including health care coverage, child care, child support enforcement, independent living services, energy assistance, food and nutrition aid, and program grant. DSS has offices across the state.*

[www.ct.gov/dss/](http://www.ct.gov/dss/)

### **CT Family Support Network** 1.877.376.2329

*The Connecticut Family Support Network is a statewide network of families who have children with disabilities and special healthcare needs. The group is comprised of parents interested in helping other parents to find the supports they need to become their child's best advocate. Services are free of charge. [www.ctfsn.org](http://www.ctfsn.org)*

### **CT Office of Early Childhood** 860.500.4412

450 Columbus Blvd., Hartford, CT 06106

*The Connecticut Office of Early Childhood (OEC) was established to coordinate and improve the various early childhood programs and components in the state to create a cohesive high-quality early childhood system. The OEC oversees a coordinated system of early childhood care, education and support. The office supports all young children in*

## **FAMILY HEALTH & EDUCATIONAL SUPPORT (CON'T)**

*their development by ensuring that early childhood policy; funding and services strengthen the critical role families, providers, educators and communities play in a child's life. [www.ct.gov/oec](http://www.ct.gov/oec)*

**CT Parent Advocacy Center (CPAC)** 800.445.2722

**Satellite Office:** Fair Haven Community Health Center,  
374 Grand Avenue, New Haven, CT 06513 203-776-3211

*CPAC is a statewide nonprofit organization that offers information and support to families of children with any disabilities or chronic illness, age birth through 26. The Center is committed to the idea that parents can be the most effective advocates for their children, given confidence that knowledge and understanding of special education law and its procedures can bring. [www.CPACinc.org](http://www.CPACinc.org)*

**CT Bureau of Special Education or Early Childhood Special Education** 860.713.6910 or 860.713.6941

P.O. Box 2219 Hartford, CT 06106

*Federal and State law requires that special education and related services be provided to eligible children with disabilities as early as the child's third birthday. Parents or other individuals who have concerns about a child's learning or development can contact their school district to request a developmental screening or an evaluation which will determine if a child requires special education.*

<https://portal.ct.gov/SDE/Special-Education/Bureau-of-Special-Education>

**Department of Children and Families (DCF)** 203.786.0500

505 Hudson Street Hartford, CT 06106

The Department of Children and Families is responsible for prevention, child protective services, children's mental health, substance abuse, and juvenile justice in the state of Connecticut.

[www.ct.gov/dcf](http://www.ct.gov/dcf)

**TO BE INCLUDED IN UPCOMING EDITIONS AND  
ELECTRONIC EDITIONS, PLEASE CONTACT  
[branfordbecc@gmail.com](mailto:branfordbecc@gmail.com) or 203-415-5237.**

## **FAMILY HEALTH & EDUCATIONAL SUPPORT (CON'T)**

**Department of Developmental Service** 860.418.6000

460 Capitol Avenue, Hartford, CT 06106

*The Department of Developmental Services (DDS) plans, develops and administers services for people with intellectual disability and people medically diagnosed as having Prader-Willi Syndrome. Services include residential placement & in-home support, day & employment programs, early intervention, family support, respite, case management, & other periodic services such as transportation, interpreter services, & clinical services. The Autism Division also operates a program for adults on the autism spectrum, without an intellectual disability. [www.ct.gov/dda](http://www.ct.gov/dda)*

**Department of Public Health ~ Vital Records** 860.509.7700

401 Capitol Avenue Hartford, CT 06134

*To obtain certified Connecticut Vital Records (Birth, Death or Marriage Certificate) <https://portal.ct.gov/DPH/Vital-Records/State-Vital-Records-Office--Home>*

**Department of Public Health/Newborns** 860.920.6628

*Newborn Screening Kits* 860.920.6500

*Every child born in Connecticut receives a newborn screening (NBS) blood-spot test. NBS helps to find babies with these health problems, so treatment can start early. Early treatment can help prevent serious illness and death.*

<https://portal.ct.gov/DPH/Laboratory/Newborn-Screening/Newborn-Screening-Program>

**East Shore District Health Department** 203.481.4233

688 E Main St, Branford, CT 06405

*This regional health department serves Branford, North Branford and East Haven, and is committed to improving the health and well-being of our residents through public health programs that promote wellness, prevent and control disease, and provide education about health lifestyles, including maternal health home visiting and doula services. The department also provides essential public health services such as building approvals, septic system permits & food service permits.*

[www.esdhd.org](http://www.esdhd.org)



## **FAMILY HEALTH & EDUCATIONAL SUPPORT (CON'T)**

### **Fair Haven Community Health Center at Trolley Square, East Haven**

203.285.1133

370 Hemingway Avenue East Haven, CT 06512

*FHCHC is a patient-centered medical home which can improve clinical quality, patient experiences, and reduce health system costs. Healthcare teams provide access to ongoing care throughout a patients' lifetime, including preventative health services, chronic disease management, and acute illness treatment. Services provided: Pediatric health and well-care, dental services, midwifery, mental health services, WIC access and social services. [www.fhchc.org](http://www.fhchc.org) or [info@fhchc.org](mailto:info@fhchc.org)*

### **Family Centered Services of Connecticut (Family CT)** 203.624.2600

235 Nicoll Street New Haven, CT 06511

*Family Centered Services works with families to ensure they are safe and nurturing places where children can succeed. Programs such as Family Check-up - A free, in-home intervention for families with children ages 2-6, home visiting programs, family based recovery, outreach, parenting education, family strengthening activities, counseling and advocacy to children and adults. Services are free. [www.familyct.org](http://www.familyct.org)*

### **Help Me Grow**

860.837.6232

*Help Me Grow is a prevention program of the Connecticut Children's Trust Fund designed to identify children at risk for developmental or behavioral problems and connect their families to existing community resources. Call the Child Development Infoline for assistance.*

[www.ctunitedway.org/CDI/HelpMeGrow.html](http://www.ctunitedway.org/CDI/HelpMeGrow.html)

### **HOPE Family Justice Center**

203.800.7204

142 Temple Street, Suite 301 New Haven, CT 06510

*The HOPE Center consists of a multi-disciplinary team of professionals who work together, under one roof, to provide coordinated services to victims of domestic violence. By providing support and healing, access to services and pathways to empowerment, the HOPE Center is dedicated to replacing violence with safety, despair with optimism, uncertainty with hope.*

## **FAMILY HEALTH & EDUCATIONAL SUPPORT (CON'T)**

### **Hospice Inc.**

203.315.7500

100 Double Beach Road, Branford, CT 06405

[www.hospice.com](http://www.hospice.com)

*The Connecticut Hospice, Inc., a 501(c)(3) not for profit, founded America's hospice movement. Now known simply as Hospice, we continue to set the national standard for home and inpatient hospice care, and are a leader in palliative care.*

### **HUSKY Health Program**

1.877.CT.HUSKY (1.877.284.8759)

55 Farmington Ave. Hartford, CT 06105

*HUSKY Health offers coverage to eligible children, parents, relative caregivers, elders, individuals with disabilities, adults with minor children and pregnant women.*

[www.ct.gov/husky](http://www.ct.gov/husky)

### **KIDSTEPS**

203.453.7592 ext.100

#### **KIDSTEPS Birth to Three** A division of **SARAH**

Administrative office: 556 Washington Ave. North Haven 06473

*Children have a lot to learn in the first three years. Birth to Three supports families when they have concerns about their children's development.*

[www.sarah-inc.org/what-we-do/birth-to-three-early-intervention](http://www.sarah-inc.org/what-we-do/birth-to-three-early-intervention) or  
[www.birth23.org](http://www.birth23.org)

### **Linda B. Chipkin Early Years Center**

203.315.3540

12 Melrose Avenue Branford, CT 06405

**Dr. Dianibel Aviles - Director**

*The Early Years Center provides consultation, evaluation and any required special education and related services including instruction in special education, speech & language development, fine & gross motor assistance and behavioral management to those children who have been determined eligible through the Planning and Placement Team process. Learning takes place in a language based program that recognizes the unique needs of all students. Free monthly developmental screenings and evaluations are completed through appropriate referral. Special Education and/or consultation services are determined according to CT State Department of Education Guidelines.*

<http://www.branfordschools.org/o/early-years-center>

## **FAMILY HEALTH & EDUCATIONAL SUPPORT (CON'T)**

**Mothers Milk Bank Northeast** 203.804.5974  
“Express yourself and save the life of a newborn” Acceleron, Guilford  
[www.milkbankne.org](http://www.milkbankne.org)

**PATH –Parent to Parent Family Voices of CT** 1.800.399.7284  
*PO Box 117 Northford CT 06472*  
*Mission: PATH is a network of families providing informational and emotional support to others who have a child with developmental or health related needs. PATH reaches out to help strengthen families coping with similar situations in Connecticut, and the organizations that serve them to reduce isolation, empower families as advocates for their children and reaffirm their values as parents and caregivers. [www.pathct.org](http://www.pathct.org)*

**Planned Parenthood of Connecticut** 203.503.0450  
345 Whitney Avenue, New Haven CT 06511 1.800.230.PLAN  
*The mission of Planned Parenthood of Connecticut is to protect the fundamental right of all individuals manage their own fertility and sexual health, and to ensure access to services, education and information to realize that right. <https://www.plannedparenthood.org/>*

### **School Based Health Centers**

Walsh Intermediate School (Melanie Wilde) 203.315.3533  
Branford High School 203.315.6727  
Mary T. Murphy Elementary 203.488.4151  
*The School Based Health Center program is a satellite of Yale New Haven Hospital and is staffed by a team that specializes in child and adolescent health. We provide comprehensive medical and mental health services during school hours to enrolled students. There is no cost to families to enroll or use our services. Care is provided on site in the school and includes complete well child exams and sick visits. Individual and family counseling is also available. Please call the numbers above for more information on completing a permission form to enroll your child. [www.branfordschools.org/](http://www.branfordschools.org/)*

## **FAMILY HEALTH & EDUCATIONAL SUPPORT (CON'T)**

### **Shoreline Family Health Care**

203.871.4188

Opening Jan. 2020

211 West Main Street Branford, CT 06405

*A new approach to family health. Primary and Behavioral Health Care for the whole family, providing fully-integrated medical, mental health and substance use treatment for the whole family. Serving children, adults and seniors.*

### **State Education Resource Center (SERC)**

860.632.1485

25 Industrial Park Road Middletown, CT 06457

*The State Education Resource Center provides resources, professional development, and a centralized library to educators, families & the community members to support CT State Dept. of Education and achieve the vision of: Equity. Excellence. Education. Some components are:*

\*SERC Library [www.ctserc.org/library](http://www.ctserc.org/library)

\*CT Parent Information and Resource Center (CT PIRC)

[www.ctpirc.org](http://www.ctpirc.org) 800-842-8678

\*Early Childhood Education Initiative (ECE) [www.ctserc.org/ece](http://www.ctserc.org/ece)

\*Positive Behavioral Interventions and Supports (PBIS)

[www.ctserc.org/pbis](http://www.ctserc.org/pbis)

### **The ARC Connecticut**

203.514.3028

200 Research Parkway, Meriden CT, 06450

*The Arc of Connecticut is an advocacy organization committed to protecting the rights of people with intellectual, cognitive, and developmental disabilities and to promoting opportunities for their full inclusion in the life of their communities. [www.thearcct.org](http://www.thearcct.org)*

### **The Cove Center for Grieving Children, Inc.**

203.634.0500

250 Pomeroy Avenue Suite 107 Meriden, CT 06450

*A death in the family can be devastating, especially for children. The Cove's mission is to "Provide Hope and Healing for Grieving Children" throughout Connecticut so they can begin to heal from the loss of a loved one through death. Children who have experienced a loss are brought together with others in the same or similar circumstances where they are encouraged to form bonds and relationships and helped to express their emotions. To find out more about The Cove, visit [www.covect.org](http://www.covect.org)*

## **FAMILY HEALTH & EDUCATIONAL SUPPORT (CON'T)**

**The Umbrella Center for Domestic Violence Services (UCDVS)** 203.789.8104  
1.888.774.2900

*This program supports victims of domestic violence and their families with a walk-in crisis center, 24-hour hotline, safe houses, assistance, support & counseling, victim advocates, transitional housing, teen & elderly programs, legal help and more.*

<https://bhcare.org/page/22595-The-Umbrella-Center-for-Domestic-Violence-Services->

### **Trinity Institute for Applied Neuroscience & Spirituality (TIANS)**

Trinity Episcopal Church 1109 Main Street Branford, CT 06405

<http://www.tians.us/>

*We live in a crazy, frenetic, fast-paced world with multiple demands on our time, and little opportunity for replenishment, refocus and simple pondering. Mindfulness and restorative practices is one way to achieve this precious internal recalibrating. When coupled with practical teachings from the neurosciences about brain function and general workings, can afford important insight and self-knowledge. TIANS aspires to help cultivate these potential benefits including stress reduction, improved self-regulation, empathy toward others, and a sense of humble gratitude. TIANS does this several ways: 1) by providing support to schools through implementing mindfulness and restorative practices accomplished through weekly classroom sessions. 2) offering a quarterly newsletter, with support and insight to parents, and anyone who works with children in different capacities. 3) pursuing outreach opportunities to audiences longing for a better understanding of the brain's role in normal development of consciousness and higher mental abilities, how this provides a framework to insights into our own Self, and; 4) fostering a better understanding of the brain in drug addiction, psychological trauma, direct physical injury, emotional dyscontrol, and bullying behavior in effort to manage and treat these persons with an enlightened understanding of their experience of the world.*

## **FAMILY HEALTH & EDUCATIONAL SUPPORT (CON'T)**

### **United Way of Connecticut Resource Helpline**

Dial 211

*In Connecticut, 2-1-1 provides free and confidential information and referral. Call 2-1-1 for help with food, housing, employment, health care, counseling and more. [www.211.org](http://www.211.org) For childcare assistance, 2-1-1 created a singular website, [211childcare.com](http://211childcare.com) a free, confidential and statewide service, that assists parents by aligning parental requests for daycare services with childcare providers and programs.*

### **VNA Community Healthcare, Inc.**

203.458.4200

753 Boston Post Road Suite 200

Guilford, CT 06437

*VNA Community Healthcare is committed to helping those of all ages in the community live healthier lives at home. In addition to skilled nursing, physical, occupational and speech therapies; maternal child health; pediatrics; social work and home health aides; the nonprofit home healthcare agency offers many wellness and family caregiver support programs throughout the region.*

*The VNA also runs programs for adults at the Guilford site including yoga, dance and wellness classes. The schedule is available online at [www.ConnecticutHomecare.org](http://www.ConnecticutHomecare.org)*

### **Women and Family Life Center**

203.458.6699

96 Fair Street Guilford, CT 06437

*The Women and Family Life Center helps women in all ages and stages of life. For more than two decades, we have provided a safe, intimate setting for women to face changes, challenges, and crises with grace, dignity and the support of a community of peers. We help women connect with others, learn and grow and find the resources they need to create successful life transitions. Children's support services are also offered.*

*[www.womenandfamilylife.org](http://www.womenandfamilylife.org)*

**TO BE INCLUDED IN UPCOMING EDITIONS AND  
ELECTRONIC EDITIONS, PLEASE CONTACT  
[branfordbecc@gmail.com](mailto:branfordbecc@gmail.com) or 203-415-5237.**

## **SUPPORTIVE MENTAL HEALTH**

### **Branford Counseling & Community Services (BCCS) 203.481.4248**

342 Harbor Street Branford, CT 06405

Email: [counselingcenter@branford-ct.gov](mailto:counselingcenter@branford-ct.gov)

*Comprehensive community services for residents of Branford including clinical services for the entire family and social services for residents struggling to meet their monthly financial commitments. Private insurance, Medicare and Medicaid provider. Hours 9:00am-5:00pm Mon-Fri (Evening appointments available upon request)*

[www.branford-ct.gov/counseling](http://www.branford-ct.gov/counseling)

### **Marissa Perrelli Brown, LCSW 203.506.5692**

365 East Main Street, Suite 2-5 Branford, CT 06405

### **Clifford W. Beers Guidance Clinic 203.772.1270**

1575 Boston Post Road, Building B, Unit C, Guilford, CT

93 Edwards Street New Haven, CT 06511

*Clifford Beers Clinic is the oldest outpatient, behavioral health clinic in the United States. We specialize in: children's behavioral issues, family violence, sexual abuse, sexually aggressive/reactive young people, substance abuse, HIV/AIDS affected children and families, and multi-cultural services. [www.cliffordbeers.org](http://www.cliffordbeers.org)*

### **Connecticut Association for Infant Mental Health (CT-AIMH)**

230 South Frontage Road New Haven, CT 06520 203.737.6422

*CT-AIMH is a professional statewide non-profit organization that offers education and expertise in infant and early childhood mental health to those working with infants and young children and their families. We assist them to support and enhance responsive relationships, to promote culturally sensitive practice, and to reflect on their work with families and their young children. <https://www.ct-aimh.org/>*

### **Cornerstone PC 203-315-1555 x30**

1090 Main Street, Branford, CT 06405

### **Generations Psychiatry Services 203-433-2550**

420 East Main Street Suite 5. Branford, CT 06405

[contact@generationspsychiatry.com](mailto:contact@generationspsychiatry.com)

*Private practice providing comprehensive services to children, adolescents, adults, geriatric and special populations.*

## **SUPPORTIVE MENTAL HEALTH (CON'T)**

### **Jamie Perillo, LPC**

203.915.1161

1092 Main Street, Branford, CT 06405

*A licensed child, adolescent, and family psychotherapist, speaker, parent and wellness educator, and founder of Inspired Families.*

### **Mona Scales, LCSW, MSW**

203.430.9113

*Licensed clinical social worker providing child, adolescent, family and adult psychotherapy. Specialized training in infant/early childhood mental health with parent/child relational approach.*

### **Shoreline Family Health Care**

203.871.4188

Opening Jan. 2020

211 West Main Street Branford, CT 06405

*A new approach to family health. Primary and Behavioral Health Care for the whole family, providing fully-integrated medical, mental health and substance use treatment for the whole family. Serving children, adults and seniors.*

### **Yale Child Study Center at Yale University**

203.785.2540

230 South Frontage Road New Haven, CT 06519

*The mission of the Yale Child Study Center is to improve the mental health of children and families, advance understanding of their psychological and developmental needs, and treat and prevent childhood mental illness through the integration of research clinical practice, and professional training. Treatment services are directly provided in the homes of children coping with the problems and stresses associated with abuse, neglect, chronic or acute physical and mental illness, parental substance abuse, and/or homelessness. [www.childstudycenter.yale.edu](http://www.childstudycenter.yale.edu)*

### **Yale School of Medicine**

203.488.0471

#### **Outpatient Behavioral Health**

15 Business Park Drive Branford, CT 06405

*Comprehensive outpatient services for adolescents 11-18 with a variety of emotional and behavioral problems including: mood disorders, anxiety, trauma and stress related disorders, disruptive behavior and impulse control, school avoidance and co-occurring substance abuse. [www.ynhh.org/psychiatric](http://www.ynhh.org/psychiatric)*



## **PRESCHOOL, AFTERSCHOOL & CHILDCARE**

**If you need care for a child with special needs, please contact the individual programs with questions about their care policies.**

### **ABC Learn with Me**

203.488.1506

172 Cedar Street, Branford CT 06405

*Robyn Harrington - Director*

*Serving children 6 weeks to 12 years, ABC Learn with Me has extended hours, 6:30 AM-6:00P, accepts Care4Kids and offers full day, half day, full year, and before & after school care.*

[www.abclearnwithmeinc.com](http://www.abclearnwithmeinc.com)

### **Branford Early Learning Center, Inc.**

203.488.4512

16 Birch Road Branford, CT 06405

*Director - Diane Pappacoda*

*Serving children from 8 weeks to prekindergarten*

*NAEYC Accredited, School Readiness Program*

*Hours: 7:30a.m. - 5:30p.m. Sliding fee scale beginning at \$8.00 a week*

*Serving free breakfast, lunch and afternoon snack as part of the state*

*CACFP. State Department of Education funded nonprofit town agency*

*founded by the Branford Community in 1974. We provide a*

*developmentally appropriate learning program in a warm and nurturing*

*environment. We follow a project approach influenced by the Reggio*

*Emilia style of learning, and use the Infant-Toddler and Preschool*

*Connecticut Frameworks. Our ratios are 3 to 8 in the infant-toddler*

*room and 3 to 15 in the preschool rooms. Beyond our focus on cognitive*

*and social skills, we teach dance, yoga, gardening, sign language, and*

*Spanish. We put a strong focus on language development and literacy.*

[branfordearlylearningcenter.com](http://branfordearlylearningcenter.com)

### **Branford Family Resource Center Preschool**

203.315.3799

Indian Neck School, 12 Melrose Avenue Branford CT

*The Branford Family Resource Center Preschool is a NAEYC program,*

*located at Indian Neck School, across from Foote Park. Full-day care is*

*provided. Center is open from 7:30AM - 5:30PM. Staff uses the*

*Connecticut Early Learning and Development Standards (ELDS) & the*

*Preschool Assessment Framework as an instruction guide. School*

*Readiness slots are available for families who will pay fees based on*

*income. Care4Kids is also accepted. Family evening functions foster*

*family connections and community building. [www.indianneck.org](http://www.indianneck.org)*

**PRESCHOOL, AFTERSCHOOL & CHILDCARE (CON'T)**

**Branford Public Schools/Pre-K Programs**

*BPS offers half day, 4-year old preschool for Branford children at no cost. The goal of the Branford Public School Pre-K programs is to ready every student for Kindergarten through a variety of activities that encourage children towards independent learning. Pre-Kindergarten is a very exciting time for both children and parents. The Branford Public School Pre-K programs follow the State of Connecticut Pre-Kindergarten Frameworks, and offer a balance of literacy, math, social, and creative skills, while also fostering the physical and creative development of the whole child. Call the school in your district for more information. [www.branfordschools.org](http://www.branfordschools.org)*

**Mary T. Murphy Pre-K** 203.483.1832  
Location: Murphy Elementary School

**John B. Sliney Pre-K** 203.481.5386  
Location: Sliney Elementary School

**Mary R. Tisko Pre-K** 203.483.1826  
Location: Tisko Elementary School

**Child Development Center** 203.488.2007  
1009 Main Street Branford, CT 06405  
*Contact - Stephanie Linke, Director*  
*Serving children 6 weeks to 5 years of age, the Child Development Center prepares children for Kindergarten in a central location. Offer full day, half day, full year, before and after school. Care4Kids is accepted. Email ~Stephanie@firstcongregationalbranford.org*  
<http://www.childdevelopmentcenterbranford.com/>

**Duck Pond Learning Center and Nursery School** 203.481.8170  
30 Jefferson Road Branford CT 06405  
*Contact - Amy Donegan, Director*  
*Serving children 6 weeks to 6 years, Hours: Mon.-Fri. 7:00AM-6:00PM. Year-round care, before & after school for Kindergarten children is offered. Care4Kids is accepted. [www.duckpondlearningcenter.com](http://www.duckpondlearningcenter.com)*

## PRESCHOOL, AFTERSCHOOL & CHILDCARE (CON'T)

**East Shoreline Catholic Academy (ESCA)** 203.488. 8386

62 Cedar Street Branford, CT 06405

*East Shoreline Catholic Academy is a dynamic Pre-K-8 STREAM school, preparing individual students to be our future leaders rooted in faith, service, and academic excellence. ESCA is accredited by the New England Association of Schools and Colleges. ESCA is the inter-parish school of St. George, Guilford, St. Margaret, Madison, and St. John Bosco, Branford. Children are provided with a loving and supportive school atmosphere, in which they feel safe and secure to embrace successes and take on challenges without fear of failure. We provide a formative faith-filled experience that celebrates and develops each child's special gifts and talents, while our rich, advanced curriculum holds our students to high academic standards.*

<https://eastshorelinecatholicacademy.org/>

**Learn and Play Christian Early Learning Center** 203.488.4028

811 East Main Street Branford, CT 06405

*Robin Costa, Director - [LearnandPlay@snet.net](mailto:LearnandPlay@snet.net)*

*Serving children 6 weeks to 5 years, Learn and Play is State of Connecticut licensed, offers year-round care and accepts Care4Kids. They have small class sizes to allow for individualized attention and child-directed activity centers and hands-on experience to engage children's natural curiosity. [www.learnandplaychristian.org](http://www.learnandplaychristian.org)*

**Linda B. Chipkin Early Years Center** 203.315.3540

Indian Neck School, 12 Melrose Ave. Branford, CT 06405

Principal Dr. Dianibel Aviles Hours: AM: 8:45-11:30 PM: 12:30-3:15

*This program is offered to all Branford children between the ages of 3-5 who have been determined eligible through P.P.T. process. The program model is trans-disciplinary, incorporating the collaborative efforts of the special ed teachers, speech and language pathologist, social workers, school psychologists, occupational & physical therapists, nurses & supporting para-professionals. Individualized education plans reflect the needs & abilities of each student providing opportunities to build language skills, develop fine and gross motor skills as well as social-emotional development.*

<http://www.branfordschools.org/o/early-years-center>

## **PRESCHOOL, AFTERSCHOOL & CHILDCARE (CON'T)**

### **Pine Orchard Nursery School**

203.488.3769

149 South Montowese Street, Branford, CT 06405

Contact~ *Erica Shanley*

Hours: 9:00-3:15 *Serving children 3-5years School year/Half days/Full Day Option* Email~ [info@pineorchardnurseryschool.org](mailto:info@pineorchardnurseryschool.org)

[www.pineorchardnurseryschool.org](http://www.pineorchardnurseryschool.org)

### **See Us Grow Childcare & Learning Center**

203.488.5437

249 West Main Street (Lakeview Plaza) Branford CT 06405

*Jessica Legere – Director (Branford)*

*Family-owned and operated in a supportive and loving environment. Our core values are kindness, mindfulness, positivity, consistency & community. Extended hours, eco-friendly and drop-in hourly care. Tours are welcomed.* Email~[seeusgrow@yahoo.com](mailto:seeusgrow@yahoo.com)

[www.seeusgrow.org](http://www.seeusgrow.org)

### **Shoreline School of Montessori**

203.481.5888

675 East Main Street Branford, CT 06405

Regina Satterthwaite –Director

Email~[director@shorelineschool.com](mailto:director@shorelineschool.com)

*Serving children ages 3-6, Shoreline School of Montessori is a privately-owned preschool and kindergarten, founded in 1985 to offer parents a high quality educational experience for their children. We proudly serve many shoreline communities including Branford, North Branford, New Haven, East Haven, Northford, Guilford and Madison, offering half- and full-day programs, five days/week. We are licensed by the CT Office of Early Childhood and are affiliated with the American Montessori Society. Our staff is highly trained and experienced and we offer a nurturing, individualized curriculum within a multi-aged classroom where we 'follow the child', celebrating and supporting each one's unique style of learning with honor and respect.*

[www.shorelineschool.com](http://www.shorelineschool.com)

*“The unknown energy that can help humanity is that which lies hidden in each child.” Maria Montessori*

**PRESCHOOL, AFTERSCHOOL & CHILDCARE (CON'T)**

**The Nest – Shoreline Campus Alphabet Academy**      203.208. 4429  
56 Stony Creek Road Branford, CT 06405

*Now open! Alphabet Academy delivered its fourth school, The Nest – Shoreline Campus, in September of 2019, serving our shoreline friends and neighbors with children ages 6 weeks to 5 years old. Consistent with our other three locations, The Nest focuses on providing a unique, joyful, and progressive school experience using RIE as the foundation for our social and emotional teaching practice.*

<https://alphabetacademyct.com/our-locations/new-location>

**Tabor Christian Community Preschool**      203.483.9240

45 Tabor Drive Branford, CT 06405

Contact - Diane Swartz, Director

Serving children 3-6

[www.taborpreschool.com](http://www.taborpreschool.com)

*Serving Branford and the Connecticut Shoreline for 35 years. Our purpose is to provide an alternative service in pre-school education incorporating a Christian influence in the daily experience. Recognizing that no two children are alike, we strive to nurture the individual child to discover his/her own talents and skills through experiential and problem solving situations. Our goal is to allow each child the opportunity for growth in self-awareness and self-confidence as they develop their ability to relate with others and their surroundings.*

**TO BE INCLUDED IN UPCOMING EDITIONS AND  
ELECTRONIC EDITIONS, PLEASE CONTACT  
[branfordbecc@gmail.com](mailto:branfordbecc@gmail.com) or 203-415-5237.**

**LICENSED FAMILY CARE IN BRANFORD AS OF 1/1/20**

**Deborah Withington**

203.481.5489

59 Driscoll Road Branford, CT 06405

*Serving children 6 weeks to 12 years, the hours are 7:00AM-5:30PM.*

*The center is open for a full year, provides all care and accepts Care4Kids. Owner is certified in CPR & First Aid.*

**Geri's Happy Home Day Care**

203.488.2141

8 Red Rock Road Branford, CT 06405

Contact~ Geraldine Mioline, [geriandbill@att.net](mailto:geriandbill@att.net)

*Serving children up to 5 year, the hours are 7:30AM- 4:30PM Monday through Thursday. The center is open full year/ full day and the owner is certified in CPR & First Aid and is a member of the Saugatuck Nutrition Program.*

**Giggle Patch Family Daycare**

203.499.9401

Michelle Gagliardi

371 Monticello Drive Branford, CT 06405

*Providing family care from 7am -5:30 pm Monday through Friday.*

*Evening and weekend care available by special arrangement.*

*Mother of 3 with degree in early childhood education and 25+ years of experience. Tuition includes morning preschool, light breakfast, lunch, snacks, diapers and wipes. Full time only, ages 1 through 5. Walkout lower level completely dedicated to childcare. Charlotte Mason/Waldorf approach. Eco-friendly. Organic vegetarian program, vegan safe. We have cats.*

[gigglepatchdc@gmail.com](mailto:gigglepatchdc@gmail.com)

**Shari's Day Care**

Shari Ives

4B Stonegate Circle Branford, CT 06405

*Providing family care ages 6 months to 8 years from 6:30am – 6pm.*

*Special needs experience.*

[Shari.Ives@yahoo.com](mailto:Shari.Ives@yahoo.com)

**LICENSED FAMILY CARE IN BRANFORD AS OF 1/1/20**  
**(CON'T)**

**Sunflower Childcare** 203.483.9119  
163 Hotchkiss Grove Road Branford, CT 06405  
Contact~ Tanja Kane  
*Serving Children from newborn through 12 yrs, the center is open all year for full day, half day, & before/after school care, as needed. Owner is certified in First Aid & CPR and accepts Care4Kids. A full Nursery School program is offered during the school year (Tisko School District).*

**Susanna's Family Daycare** 203.815.8017  
93 Waverly Park Road Branford, CT 06405  
Contact~ Susanna Davis  
*Serving Children infants to 12 years, the hours of the center are 6:30 AM-5:30PM. Care4Kids is accepted and owner is certified in First Aid & CPR and a member of the Saugatuck Nutrition Program.*

**The Day Care on the Road** 203.927.7595  
81 Dominican Road Branford CT 06405  
Contact ~ Silvia Rojas – Galindo  
*Owner is Spanish speaking and operates the center from 7AM – 4:30PM. Owner is certified in CPR & First Aid.*  
[Thedaycareontheroad.wordpress.com](http://Thedaycareontheroad.wordpress.com)

**Theresa Ferguson** 203.314.1431  
10 Woodvale Road Ext. Branford, CT 06405  
Email~ tferguson816@sbcglobal.net  
*Serving children: Infant to 12 years Hours: 7:00AM-5:30PM*  
*Accepts Care4Kids, Full year & before/after school*  
*Certified in CPR, First Aid, Administration of Meds, Sliney school district.*

## **PLAYGROUPS, ENRICHMENT, HOME VISITING**

### **Amy's Active Learning**

860.304.2347

One Post Office Square Clinton, CT 06413

*Amy Stevens-Director*

*This program offers workshops birthday parties, summer camp and hands-on learning experiences for children ages 3-8. Art, science, literacy, engineering and nutrition are focused on and are combined with movement and yoga. [www.amysactivelearning.com](http://www.amysactivelearning.com)*

### **Branford Parks and Recreation Department**

203.488.8304

46 Church Street Branford, CT 06405

*(Offers Mommy and Me and Toddler Groups and much more)*

[www.branfordrecreation.org](http://www.branfordrecreation.org)

### **James Blackstone Memorial Library**

203.488.1441

758 Main Street Branford, CT 06405

*(Offers story hours and crafts for children)*

[www.blackstone.lioninc.org](http://www.blackstone.lioninc.org)

### **Family Resource Center Playgroups**

203.481.5066

12 Melrose Avenue Branford, CT 06405

*The Branford Family Resource Center Parent Educator's office is located at Indian Neck School. Offering registered "Group Connections" for families in the Branford community with children birth-5 yrs. old. Program includes art, music & movement, creative play, & early literacy activities. The FRC Parent Educator facilitates a discussion on child developmental milestones during the group connection class and uses the Ages and Stages Developmental screening tool. The FRC provides monthly free personal visits either in the office or in the comfort of your home using the Parents as Teachers curriculum model. The FRC collaborates with ERACE to provide ESL Family Literacy classes during our Group Connection program in the Fall and the Spring.*

<http://www.branfordschools.org/o/frc-sacc>



## **PLAYGROUPS, ENRICHMENT, HOME VISITING (CON'T)**

### **Kidscapades, LLC**

860.271.5866

Director: Elena Bigio kidscapadesllc@gmail.com

*We bring the fun to you! A unique program hosting innovative children's activities for children ages 3 and up. Themed birthday parties, toddler programs and sensory programs available. Visiting workshops to centers and programs.*

<https://www.kidscapades.com/>

### **Nurturing Families Network, ESDHD**

203.481.4233 x577

688 E Main St, Branford, CT 06405

Clinical Supervisor – Alison Tylicszczak, LCSW

*Provides a free service is for pregnant women in Branford that includes weekly home visits, pregnancy and parenting information, pediatric developmental screenings, and parenting guidance with monthly get-togethers. Nurturing Families Network is a Parents as Teachers, evidence based, statewide service designed to promote positive parenting through the office of early childhood.*

[www.esdhd.org/Health Programs/Maternal Child/](http://www.esdhd.org/Health Programs/Maternal Child/)

### **Willoughby Wallace Library**

203.488.8702

146 Thimble Islands Road Branford, CT 06405

*(Offers story hours and crafts for children)*

[www.wtml.org](http://www.wtml.org)

## **AFTERSCHOOL PROGRAMS**

### **Branford School Age Child Care (SACC)**

203.481.5066

12 Melrose Avenue Branford, CT 06405

*Michele Krumenacker~ Director*

*SACC is a quality child care program that is accessible and affordable to all Branford families, and available to children in grades K-8 in the Branford schools. The program is offered during school vacations and many of the holidays. Before school program begins at 7:00 AM; after school program ends at 6:00PM. A program for Walsh students is available at Walsh Intermediate School. Care4Kids is accepted and there are a limited number of scholarships available. Call for more information.*

## **AFTERSCHOOL PROGRAMS (CON'T)**

**Branford Parks and Recreation Department** 203.488.8304

46 Church Street Branford, CT 06405

*Alex Palluzzi – Director*

*An Afterschool program for school aged children K-4, contact Director for more information about 'AFTERNOON ADVENTURES'.*

[www.branfordrecreation.org](http://www.branfordrecreation.org)

**Soundview Family YMCA** 203.481.9622

628 East Main Street Branford, CT

*Doug Shaw~ Executive Director*

Email:dougshaw@cccymca.org

*The YMCA after school program is offered for students in grades 1-8 from 3:00PM-6:00PM. This is a state licensed after school program for students in Branford, Guilford and North Branford. Children have a healthy snack each day, study time and each week use our Hi and Low ropes elements as well as swimming in the pool. Financial assistance is offered. [www.soundviewymca.org](http://www.soundviewymca.org)*

## **FINANCIAL ASSISTANCE**

**Branford Counseling & Community Services(BCCS)** 203.481.4248

342 Harbor Street, Branford, CT 06405

*BCCS provides limited financial assistance for people who do not have sufficient resources to meet their living expenses and people who cannot get immediate financial help from SAGA or AFDC.*

[www.branford-ct.gov/Counseling](http://www.branford-ct.gov/Counseling)

### **Branford School Readiness Program**

*Providing affordable, developmentally appropriate care and education for children ages 3-5 years old in a safe and nurturing environment. The highly trained early childhood staff creates an enriching environment for children to discover and learn, while concentrating on the social, emotional, cognitive and physical development of each child. The fees are based on a sliding scale determined by family income. School readiness classrooms are located at Branford Early Learning Center - 16 Birch Road – 203.488.4512 and Branford Family Resource Center - 12 Melrose Ave. 203.481.5066*

## **FINANCIAL ASSISTANCE (CON'T)**

### **Care4Kids**

1.800.214.KIDS (5437)

*A program helping low-to-moderate income families pay for child care cost. Sponsored by State of CT, Department of Social Services, sponsorships are accepted by many daycare providers. call for information. [www.ctcare4kids.com](http://www.ctcare4kids.com)*

### **CT Department of Social Services**

1.855.626.6632

*The Department of Social Services (DSS) delivers a wide variety of services to children, families, adults, people with disabilities and the elderly, including health care coverage, child care, child support enforcement, independent living services, energy assistance, food and nutrition aid, and program grant. DSS has offices across the state. [www.ct.gov/dss/](http://www.ct.gov/dss/)*

### **CT Energy Assistance Program**

203.481-3663

*Connecticut's winter heating assistance program pays for most heating sources, including: natural gas, electricity, oil, propane, kerosene, coal, wood, and wood pellets. The exact level of benefits is based on the number of members in the household, the household's income, and whether it is a "vulnerable" household. Please contact the Pat Andriole Volunteer Service Center.*

### **The Weatherization Assistance Program**

203.481-3663

*If you qualify for the Energy Assistance Program you may also be eligible for the Weatherization Assistance Program that will help conserve energy and lower your household heating bills. This program helps low-income persons minimize energy-related costs and fuel usage in their homes through retrofits and home improvement measures.*

### **Operation Fuel**

2-1-1

*Operation Fuel is a network of fuel banks that helps families and small businesses by providing assistance to the residents of Connecticut who may have no other option to cover energy costs. While approval is income-based, their private dollars allow them to help anyone in an energy crisis. **For more information, go to [www.OperationFuel.org](http://www.OperationFuel.org) or call 2-1-1 to apply for assistance.***

## **FINANCIAL ASSISTANCE (CON'T)**

**Women, Infants, & Children (WIC)** 203.789.3563

1009 Main Street, Branford, CT

*The WIC Program comes to Branford 4 times a month. A satellite program of the St. Raphael Campus program, appointments are held on alternating Wednesdays and Thursdays from 8:30-4:30 at the First Congregational Church, on the second and fourth weeks of the month. To make an appointment call (203) 789-3563.*

## **DENTAL**

**Admire Dental** 203.864.3750

1060 West Main Street Branford, CT

Dr. Panks Dhingra, DDS

[www.AdmireDental.com/branford-home.html](http://www.AdmireDental.com/branford-home.html)

**Branford Healthy Smiles** 203.415.5237

A community partnership providing oral health education, support, and improved access to dental services for all individuals within our community. Educational learning kit available to borrow for ages PreK through elementary. Supporting finding a dental home for all Branford children.

**Branford Dental Care** 203.488.7444

134 Montowese Street Branford, CT 06405

*~We specialize in children! Bilingual speaking (Spanish)*

Accepts HUSKY (children only) Contact: Angela White, Business Manager with *questions*: AWhite@branforddentalcare.com

[www.branforddentalcare.com](http://www.branforddentalcare.com)

**CT Braces-New Haven Orthodontic Office** 203. 285.3750

881 Whalley Ave Rear New Haven, CT 06515

Dr. Agata Bartels

*Accepts private insurance and Husky. Speaks Spanish.*

[www.ctbraces.com](http://www.ctbraces.com)

## DENTAL (CON'T)

**Drs. Ronald Bailey, DMD & Ping Ge, DDS** 203.488.1428  
5 South Main Street Branford CT 06405

*Will accept many insurance carriers but do not accept Husky.*

<http://www.branfordfamilydental.com/>

**Dr. Berky Dental** New Patient Hotline 203.351.2990  
29 Park Place Branford, CT 06405 203.315.9909

*From toddlers to the elderly, our skilled dental team is familiar with the unique needs of every patient, no matter their age. Our goal is to help them develop great oral habits that will last them a lifetime.*

**Dr. Norman F. Dahl III, DDS, PC** 203.483.8806

904 West Main Street Suite A Branford, CT 06405

[www.DrNormanDahl.com](http://www.DrNormanDahl.com)

**Dr. Gary Dubin, DDS** 203.481.3200

80 East Main Street Branford, CT 06405

Accepts HUSKY (children only)

[www.guilfordbranforddental.com](http://www.guilfordbranforddental.com)

**Dr. Jonathan Fisk, DDS** 203.488.6616

179 E Main St Branford, CT (or)

630 Foxon Rd North Branford, CT 203.484.1111

*Both of Dr. Fisk's offices are specialty offices, and provide orthodontic treatment to both children and adults. The office accepts all insurance, including Husky and though not 'in network' with all insurance companies, they do accept assignment of benefits from all.*

**Dr. Norma Gomez** 203.481.0338

**Gomez and Associates**

144 North Main Street Branford CT 06405

*~Helping you achieve the smile of your dreams~*

*Languages spoken: English, Spanish and Portuguese. Will accept Husky and currently accepting new patients.*

[www.normagomezdds.com](http://www.normagomezdds.com)

**Just Smiles Dental** 203.488.1487

869 West Main Street Branford, CT 06405

Accepts HUSKY (children under 21)

## **DENTAL (CON'T)**

**Dr. Roger Lowlicht, MS, DDS** 203.689.0886  
Oral Surgeon  
500 East Main Street Suite 216

**Mendillo Family Dentistry** 203.488.6314  
Dr. James Mendillo DMD, Dr. Hillary Mendillo, DDS  
62 Kirkham Street Branford CT 06405 ~*We go the extra smile!*  
Accepts HUSKY (Children Only)  
[www.mendillofamilydentistry.com](http://www.mendillofamilydentistry.com)

**Dr. John Michalek, DDS** 203.488.6553  
420 East Main Street Building 3, Suite 17 Branford CT  
*A dental practice that prides itself on developing individual relationships with all patients and getting to know you and your needs in their office. Dr. Michalek makes himself available 24/7 to all our regular patients should any needs arise. This office accepts HUSKY (children only) and will make accommodations for new patients in need of a provider. Will accept most insurance coverages.*  
[www.branforddentist.com](http://www.branforddentist.com)

**Dr. Brete D. Moran, D.M.D., LLC** 203.483.8656  
Periodontics Practice  
5 South Main Street, Branford  
*Non-surgical and surgical therapy, dental implants, soft and hard tissue grafting. Does not accept Husky.*

**Dr. Peter D. Russo, DMD** 203.483.1816  
*Specializing in Orthodontics*  
53 Montowese Street Branford, CT 06405 [www.PeterDRussoDMD.com](http://www.PeterDRussoDMD.com)

**TO BE INCLUDED IN UPCOMING EDITIONS AND  
ELECTRONIC EDITIONS, PLEASE CONTACT  
[branfordbecc@gmail.com](mailto:branfordbecc@gmail.com) or 203-415-5237.**

## NUTRITION

**American Diabetic Association**  
(800-342-2383)

1.800.DIABETES

[www.diabetes.org](http://www.diabetes.org)

### **Branford Food Pantry**

203.481.3663

30 Harrison Avenue Branford, CT 06405

*Wendy Cowles~Director*

*The mission of the Branford Food Pantry is to provide groceries for Branford families in need. Snacks for Kids program as well.*

**Hours:** *Tuesday and Friday mornings from 8:30AM to 11:00AM and Tuesday 4:30PM to 6:00PM. Special Holiday meals delivered for Thanksgiving & Christmas.* [branfordfoodpantry30@gmail.com](mailto:branfordfoodpantry30@gmail.com)

### **Branford Summer Meals Program**

203.315.6741

*Providing free summer meals at various schools to kids and teens 18 and under. Visit [www.branfordschools.org](http://www.branfordschools.org) or [www.ctsummermeals.org](http://www.ctsummermeals.org)*

### **Feed Branford Kids**

203.481.3663

*A sister program to the Branford Food Pantry provides eligible elementary and school readiness programs with a backpack of suitable food for take home on Fridays. This is a voluntary program eligible to any family. Schools can help identify families in need. Please inquire with your early care center or grade school or call the number above or visit the website. [www.branfordfoodpantry.org](http://www.branfordfoodpantry.org)*

### **Community Dining Room**

203.488.9750

**30 Harrison Avenue Branford, CT 06405**

*Director~Judy Barron*

*Lunch is served every day from 12PM-1PM*

*Tuesday Family Dinner with a Story Time 5:30PM*

*Wednesday & Friday Night Take-Out Program, call 203-488-0447*

*Home Delivery available 3 days a week*

*Saturday Brunch 11:00AM-12:00PM*

[www.communitydiningroom.org](http://www.communitydiningroom.org)

## NUTRITION (CON'T)

**CT Mobile Food Bank Truck** 203.469.5000

New location & schedule: Branford Fire Department  
45 North Main Street Branford CT 06405

*The second Friday of each month at 9AM to 10AM Free fresh produce for all. Bring your own bags.*

<http://www.ctfoodbank.org/get-help/connecticut-food-banks-mobile-pantry-schedule/>

### **SNAP – Supplemental Nutrition Assistance Program**

Department of Social Services 800.842.1508

[www.ct.gov/snap](http://www.ct.gov/snap)

**Women, Infants, & Children (WIC)** 203.789.3563

(St. Raphael’s Campus/serving Branford 2x monthly)

1009 Main Street, Branford, CT

*The WIC Program comes to Branford four times a month. A satellite program of the St. Raphael Campus program, appointments are held on alternating Wednesdays and Thursdays from 8:30-4:30 at the First Congregational Church, on the second and fourth weeks of the month. To make an appointment call (203) 789-3563.*

## VISION CARE

**Academy of Vision and Learning Optometry** 203-453-4813

2514 Boston Post Road, Suite 1C Guilford, CT 06437

Dr. Chelsea Wang

Specialty is working with children with vision problems which interfere with their ability to read, to learn, to comprehend and even pay attention.

**Branford Family Vision Care** 203.481.5909

71 Cedar Street Branford, CT 06405

[www.branfordfamilyvision.com](http://www.branfordfamilyvision.com)

**Branford Optometric Associates** 203.488.9544

60 Montowese Street Branford, CT 06405

[www.branfordoptometric.com](http://www.branfordoptometric.com)



## VISION CARE (CON'T)

**Eye Physicians and Surgeons PC** 203.488.5688  
1236 Main Street Branford, CT 06405  
[www.eyevision2020.net](http://www.eyevision2020.net)  
*You won't believe your eyes!*

**Fritz Eye Care Inc.** 203.488.9900  
267 East Main Street Unit 4 Branford CT 06405

## PEDIATRICIANS

**Branford/North Branford Pediatric, PC** 203.481.5591  
682 East Main Street Branford, CT 06405

**Branford Pediatrics and Allergy Group** 203.481.7008  
784 East Main Street Branford, CT 06405

**Fair Haven Community Health Center** 203.285.1133  
370 Hemingway Avenue East Haven, CT 06512

**Pediatric Associates of Branford** 203.488.8345  
420 East Main Street Branford, CT 06405

**Shoreline Family Health Care** 203-871-4188  
Opening Jan. 2020  
211 West Main Street Branford, CT 06405

## EDUCATION

**Branford Public Schools**  
**Administrative Offices** 203.488.7276  
1111 Main Street Branford, CT 06405  
[www.branfordschools.org](http://www.branfordschools.org)

**Branford High School (Grades 9-12)** 203.488.7291  
185 East Main Street Branford, CT 06405  
[www.branfordhigh.org](http://www.branfordhigh.org)

## **EDUCATION (CON'T)**

**CT Experiential Learning Center (CELC)** 203.433.4658

28 School Street  
Branford CT 06405

*A dynamic middle school program CT Experiential Learning Center of Branford provides an energizing, personalized, and significant middle school experience, where children can flourish during these important and impactful 5<sup>th</sup>-8<sup>th</sup> grade years. Classes are small classes and combine exceptional academics with hands-on and real-world learning experiences that align with student's academic, social and developmental needs. Email~ mandm@CTExperiential.org*  
[www.CTExperiential.org](http://www.CTExperiential.org)

**East Shoreline Catholic Academy (ESCA)** 203.488. 8386

62 Cedar Street Branford, CT 06405

*East Shoreline Catholic Academy is a dynamic Pre-K-8 STREAM school, preparing individual students to be our future leaders rooted in faith, service, and academic excellence. ESCA is accredited by the New England Association of Schools and Colleges. ESCA is the inter-parish school of St. George, Guilford, St. Margaret, Madison, and St. John Bosco, Branford. Children are provided with a loving and supportive school atmosphere, in which they feel safe and secure to embrace successes and take on challenges without fear of failure. We provide a formative faith-filled experience that celebrates and develops each child's special gifts and talents, while our rich, advanced curriculum holds our students to high academic standards.*

<https://eastshorelinecatholicacademy.org/>

**ERACE Adult Education** 203.488.5693

185 East Main Street Branford, CT 06405

[www.erace-adulted.org](http://www.erace-adulted.org)

**Family Resource Center** 203.315.3799

12 Melrose Avenue Branford, CT 06405

<http://www.branfordschools.org/o/frc-sacc>

**John B. Sliney School Grades (Pre-K-Grade 4)** 203.481.5386

23 Eades Street Branford, CT 06405

[www.slineyelementary.org](http://www.slineyelementary.org)

## **EDUCATION (CON'T)**

**Linda B. Chipkin Early Years Center (Pre-K)** 203.315.3540  
12 Melrose Avenue Branford, CT 06405  
[www.lindabchipkin.ct.bpe.schoolinsites.com](http://www.lindabchipkin.ct.bpe.schoolinsites.com)

**Mary R. Tisko School Grades (Pre-K-Grade 4)** 203.483.1826  
118 Damascus Road Branford, CT 06405  
[www.tiskoelementary.org](http://www.tiskoelementary.org)

**Mary T. Murphy School Grades (Pre-K- Grade 4)** 203.483.1832  
24 Brushy Plain Road Branford, CT 06405  
[www.murphyelementary.org](http://www.murphyelementary.org)

**New Haven School Open Choice** 203.498.6843  
*School open choice is part of a law passed by the legislature of the State of CT to help reduce racial, ethnic and economic isolation in CT. It allows students from the suburbs to enter a lottery and attend school in New Haven provided there are appropriate openings.*  
<https://www.aces.org/schools-programs/magnet-school-parent-choice>

**Student Services (Pre-K-12)** 203.488.5000  
12 Melrose Ave. Branford, CT 06405  
Special Education services for Branford Public Schools  
<http://www.branfordschools.org/information--178>

**School Transportation – First Student** 203.488.6186

**Walsh Intermediate School (Grades 5-8)** 203.488.8317  
185 Damascus Road Branford, CT 06405  
[www.walshintermediate.org](http://www.walshintermediate.org)

## **HOUSES OF WORSHIP**

<b>Branford Evangelical Free Church</b> 231 Leetes Island Road Branford, CT 06405	203.488.1885
<b>Chabad of the Shoreline (Synagogue)</b> <a href="http://www.jewishshoreline.org">www.jewishshoreline.org</a>	203.453.5580
<b>Church of Christ (Congregational)</b> 192 Thimble Islands Road Branford, CT 06405 <a href="http://stonycreekchurchct.org">http://stonycreekchurchct.org</a>	203.488.7827
<b>Community Baptist Church</b> 53 Hopson Ave, Branford, CT 06405	203.488.8581
<b>First Baptist Church of Branford</b> 975 Main Street Branford, CT 06405 <a href="http://www.firstbaptistbranford.com">www.firstbaptistbranford.com</a>	203.488.9777
<b>First Congregational Church</b> 1009 Main Street Branford, CT 06405 <a href="http://www.firstcongregationalbranford.org">www.firstcongregationalbranford.org</a>	203.488.7201
<b>Kingdom Hall (Jehovah's Witness)</b> 2 Baldwin Drive Branford, CT 06405	203.488.9814
<b>Shoreline Community Church</b> 9 Business Park Dr unit 1-4 Branford, CT 06405 <a href="http://www.sccbranford.org">www.sccbranford.org</a>	203.481.8919
<b>St. Mary's Church (Roman Catholic)</b> 731 Main Street Branford, CT 06405 <a href="http://www.stmarybranford.org">www.stmarybranford.org</a>	203.488.1607
<b>St. Stephen AME Zion Church (Methodist)</b> 31 Rogers Street Branford, CT 06405	203.481.3146
<b>St. Therese Church (Roman Catholic)</b> 105 Leetes Island Road Branford CT 06405 <a href="http://www.sttherese.org">www.sttherese.org</a>	203.488.2998

## **HOUSES OF WORSHIP (CON'T)**

**Tabor Lutheran Church** 203.488.2541  
45 Tabor Drive Branford CT 06405  
[www.taborchurch.net](http://www.taborchurch.net)

**Temple Beth Tikvah (Synagogue)** 203.245.7028  
196 Durham Road Madison, CT 06443  
[www.templebethtikvahct.org](http://www.templebethtikvahct.org)

**Trinity Episcopal Church** 203.488.2681  
1109 Main Street Branford, CT 06405  
[www.trinitybranford.org](http://www.trinitybranford.org)

**United Methodist Church** 203.488.0549  
811 East Main Street Branford CT 06405  
[www.gbgm-umc.org](http://www.gbgm-umc.org)

## **LIBRARIES**

**James Blackstone Memorial Library** 203.488.1441  
758 Main Street Branford, CT 06405  
[www.blackstone.lioninc.org](http://www.blackstone.lioninc.org)

**Willoughby Wallace Library** 203.488.8702  
146 Thimble Islands Road Branford, CT 06405  
[www.wtml.org](http://www.wtml.org)

## **LITERACY PROGRAMS, LANGUAGE ASSISTANCE AND ADULT ED**

**ERACE Adult Education** 203.488.5693  
185 East Main Street Branford, CT 06405  
*English Language Learners and Family Literacy Programs offered both Day & Evening, Year Round* [www.erace-adulted.org](http://www.erace-adulted.org)

**International Institute for Refugees & Immigrants** 203.336.0141  
670 Clinton Avenue Bridgeport, CT 06605  
*The Connecticut Institute for Refugees and Immigrants (CIRI) is a statewide nonprofit organization that assists refugees and immigrants resolve legal, economic, linguistic and social barriers so that they*

## **LITERACY PROGRAMS, LANGUAGE ASSISTANCE AND ADULT ED**

*become self-sufficient, integrated and contributing members of the community. CIRI achieves this mission by providing a compassionate array of high-quality legal, social and educational programming and by promoting cross-cultural understanding and decent treatment for all.*

<https://cirict.org/>

### **Literacy Volunteers of Greater New Haven**

203.776.5899

4 Science Park New Haven CT 06511

*Literacy Volunteers of Greater New Haven is a non-profit educational organization that trains, certifies, and supports tutors to provide tutoring in Basic Literacy and English for Speakers of Other Languages (ESOL). Literacy volunteers provide free tutoring to willing adults who want to improve their reading, writing, and oral communication skills. Our goal is to increase the English language skills of these adult students so they can participate more fully as parents, employees and as members of our community. Tutors always needed. If you can read, you can help.*

[www.lvaghn.org](http://www.lvaghn.org)

### **Read to Grow**

203.488.6800

53 School Ground Road, Unit 3 Branford, CT 06405

*Read to Grow is the only statewide nonprofit organization that connects with parents in the hospital setting when a baby is born. The agency provides free children's books to families through a network of community-based health and human service agencies, schools, and childcare programs that interact with children of all ages. For more information, please visit our website, or call 203-488-6800.*

[www.readtogrow.org](http://www.readtogrow.org)

### **Reach Out and Read**

*Reach Out and Read prepares America's youngest children to succeed in school by partnering with doctors to prescribe books and encourage families to read together. We are evidence-based, nonprofit organization that trains and supports medical providers who give books to children and advice to parents about the importance of reading aloud. Our program is delivered by doctors during well-child visits for children ages 6 months through 5 years. Ask your pediatrician about this program.*

[www.ReachOutandRead.org](http://www.ReachOutandRead.org)

## **LITERACY PROGRAMS, LANGUAGE ASSISTANCE AND ADULT ED**

### **Unidad Latina en Accion (ULA)**

37 Howe St. New Haven, CT 06511-4605

*We are a grassroots social justice organization made up of immigrants in the Greater New Haven area since 2002. Many of us have suffered human rights abuses on the job and in the immigration system. We come together to address human rights abuses in our community. We combine direct action, legal action, and education to create systemic change. We speak Spanish, Mam, Totonaco and Kaqchikel. ULA is a leading member of the [Connecticut Immigrant Rights Alliance](#), a statewide coalition including immigrant, faith, labor, civil rights and human service organizations.*

<https://ulanewhaven.org/>

## **HOMESCHOOLING**

### **Catholic Home Educators in Connecticut**

*Well established, independent support group dedicated to helping those who ask for assistance in Catholic home education.*

Email: [cath\\_home\\_ed\\_in\\_ct@hotmail.com](mailto:cath_home_ed_in_ct@hotmail.com)

### **CT Homeschool Network**

Email: [info@cthomeschoolnetwork.org](mailto:info@cthomeschoolnetwork.org)

Facebook group: <https://www.facebook.com/groups/46046781601/>

*To become involved and receive information, visit their website and enter your email information to be contacted by the organization.*

[www.cthomeschoolnetwork.org](http://www.cthomeschoolnetwork.org)

### **Shoreline Homeschoolers of Connecticut**

*Shoreline Homeschoolers is a welcoming, local support group originally formed over 20 years ago, consisting of families from New Haven to Mystic along the CT shoreline. The mission is to provide support and information to those interested in homeschooling. The homeschooling community offers support groups & newcomer gatherings; provides an email newsletter of classes, workshops, fieldtrips, legislative news, curriculum swaps etc.; discounted educator cards; inclusion in year-long theatre series for children & families; a “for kids, by kids” newsletter, annual yearbook; and annual events including a science fair, art show, harvest festival, cabaret, potluck socials etc. (cont. next page)*

## HOMESCHOOLING (CON'T)

### **Shoreline Homeschoolers of Connecticut (Con't)**

[Email~info@shorelinehomeschoolers.org](mailto:info@shorelinehomeschoolers.org), visit their Facebook page or website [www.shorelinehomeschoolers.org](http://www.shorelinehomeschoolers.org)

### **Great Ways to Home Educate (GWHE)**

*GWHE welcomes all families, regardless of their faith, curriculum choice, or teaching style. The location of activities varies depending upon the interests of our members. We currently run the following activities: Co-ed Soccer, Used Curriculum Fair, Support Group Meetings, New Homeschooler Information Nights, Spelling Bee, Annual Picnic, Science Classes, Engineering Day, Teen Group, and many more. Visit the website at [www.gwhe.org](http://www.gwhe.org) or contact the President or VP of Information and Registration*

*Tonya Mankowski, [gwhepresident@gmail.com](mailto:gwhepresident@gmail.com) and  
Karen Bigham [GWHEinformation@gmail.com](mailto:GWHEinformation@gmail.com)*

**The Education Association of  
Christian Homeschoolers of Connecticut**  
[www.teachct.org](http://www.teachct.org)

860.938.6765

### **Unschoolers Unlimited**

203.458.7402

22 Wildrose Avenue Guilford, CT 06437

Informal network of people learning to trust the best ways to support their children's ability to learn and grow. Holding family gatherings- to play and socialize, to support and encourage one another, to share ideas and information. They publish an occasional newsletter and a mailing list. Email~ [nedvare@ntplx.net](mailto:nedvare@ntplx.net) -for free information packet about homeschooling. [unschoolersunlimited.blogspot.com](http://unschoolersunlimited.blogspot.com)

**TO BE INCLUDED IN UPCOMING EDITIONS AND  
ELECTRONIC EDITIONS, PLEASE CONTACT  
[branfordbecc@gmail.com](mailto:branfordbecc@gmail.com) or 203-415-5237.**



## **RECREATION AND ENTERTAINMENT**

**AMF Circle Lanes of East Haven** (Bowling) 203.467.6351  
525 Main Street East Haven CT 06512

### **Branford Festival**

*Town Green Father's Day weekend* [www.branfordfestival.com](http://www.branfordfestival.com)

### **Branford Land Trust**

203.483.5263

Walking trails, land preservation and outdoor programs.

<https://branfordlandtrust.org/>

### **CT Sportsplex**

203.484.4383

150 Foxon Rd, North Branford, CT 06471

[www.ctsportsplex.com/](http://www.ctsportsplex.com/)

### **Escape New Haven**

860.576.9997

103 Whitney Ave. New Haven, CT 06510

*An adventure space where teams work together to solve a series of puzzles. Call for more information.*

[www.escapenewhaven.com](http://www.escapenewhaven.com)

### **Fired Up!**

203.481.1015

1060 Main Street Branford, CT 06405

***Fired Up!** is a paint your own pottery studio. Walk in any time to paint pottery or join us for one of our special events and classes.*

[www.firedupbranford.com/](http://www.firedupbranford.com/)

### **Gather Branford**

415.606.2504

1048 Main Street Branford, CT 06405

*Gather is a pop-up shop on the Branford Green that offers community-based events, classes, shops, and more with a goal of bringing life and activity to the downtown area. You never know what will pop up at Gather – you could find a crafting class for children, a pop-up gift shop, an art exhibit, and plenty of chances for a parents' night out. Gather's beautiful space is also available to rent for dinner parties or events. For a full listing of our events, see the website. Gather Branford also found*

[www.gatherbranford.com](http://www.gatherbranford.com)

## **RECREATION AND ENTERTAINMENT (CON'T)**

**Golf-Twin Lakes Golf Course** 203.481.3776  
241 Twin Lakes Road, North Branford  
*Twin lakes is a public 9-hole, par 3 course located just over the Branford line in North Branford. It is a daily-fee golf course and is open to the public. [www.twinlakesgolfct.com](http://www.twinlakesgolfct.com)*

**Golf-Guilford Lakes Golf Course** 203.453.8214  
200 North Madison Road, Guilford  
*This is a municipal 9-hole course at the Guilford Lakes Golf Course facility in Guilford. It is open to the public.*

**Harrison House Museum** 203.488.4828  
124 Main Street Branford, CT 06405  
<https://branfordhistoricalsociety.org/>

**James Blackstone Memorial Library** 203.488.1441  
758 Main Street Branford, CT 06405  
[www.blackstone.lioninc.org](http://www.blackstone.lioninc.org)

\*\* Blackstone Library has Museum passes available to a wide variety of museums in the state. Reservations required. Please call **203. 488. 1441. ext. 321. Rules apply.**

**“It” Indoor Adventure at Jordan’s Furniture** 203.780.9199  
40 Sargent Dr. New Haven, CT 06511  
*“It” is the largest indoor adventure ropes course in the world. 60-foot-high ropes course on four levels with more than 100 activities.*  
[www.jordans.com/attractions/it](http://www.jordans.com/attractions/it)

**New Haven Children’s Museum** 203.562.5437  
22 Wall Street New Haven, CT 06511  
[www.childrensbuiding.org/About.htm](http://www.childrensbuiding.org/About.htm)

**Peabody Museum of Natural History** 203.432.8987  
170 Whitney Avenue New Haven, CT 06511

## **RECREATION AND ENTERTAINMENT (CON'T)**

**Regal Movie Theatre** 203.481.2711  
325 East Main Street Branford, CT 06405  
[www.regmovies.com/theaters/regal-branford-stadium-12/8464](http://www.regmovies.com/theaters/regal-branford-stadium-12/8464)

**Rockin' Jump – The Ultimate Trampoline Park** 203.397.6726  
709 Foxon Road East Haven, CT 06513  
[www.easthaven.rockinjump.com](http://www.easthaven.rockinjump.com)

**Shoreline Greenway Trail**  
<https://shorelinegreenwaytrail.org/>

**Shoreline Theatre Company**  
<https://www.shorelinetheatrecompany.com/>  
Musical Theatre company partnering with various camps and churches throughout Branford.

**Shore Line Trolley Museum** 203.467.6927  
River Street, East Haven, CT 06512  
[www.shorelinetrolley.org](http://www.shorelinetrolley.org)

**Soundview Family YMCA** 203.481.9622  
628 East Main Street Branford, CT 06405  
Serving infants to seniors  
*The Y is open to any shoreline resident to improve their health, use two state of the art pools or take part in any of the great programs.*  
*Membership to join the Y is on a sliding scale based on total household income. Offering program financial assistance for swim lessons, fitness classes, summer camps and afterschool care.*  
[www.soundviewymca.org](http://www.soundviewymca.org)

**Stony Creek Quarry** 203.488.3904  
99 Quarry Road, Branford [www.stonycreekquarry.com](http://www.stonycreekquarry.com)

### **Stony Creek Thimble Island Tours**

Sea Mist [www.thimbleislandcruise.com](http://www.thimbleislandcruise.com) 203.488.8905  
Volsunga [www.thimbleislands.com](http://www.thimbleislands.com) 203.481.3345  
*Boats leave from Stony Creek Town Dock*

## **RECREATION AND ENTERTAINMENT (CON'T)**

### **Tabor Community Arts Center**

203.488.5668

45 Tabor Drive Branford, CT 06405

*Tabor Arts is the shoreline's theatrical and musical creative outlet for people of all ages. Our highly talented and qualified staff provide an outstanding educational environment that promotes fun, imagination, and has room for all characters!*

### **Town of Branford**

Links to Community Organizations and Services

<https://www.branford-ct.gov/community>

### **Walsh Intermediate School Pool & Hospice Pool Schedules**

[www.branfordrecreation.org](http://www.branfordrecreation.org)

### **Willoughby Wallace Library**

203.488.8702

146 Thimble Islands Road Branford, CT 06405

[www.wtml.org](http://www.wtml.org)

## **PARKS AND PLAYGROUNDS**

Bay View Park Thimble Island Road Stony Creek

Branford Hills Park, Jefferson Rd. and Burban Dr.

Flax Mill Soccer Field (playing field) Rt. 139

Foote Memorial Park (playground, playing field, park) Melrose Avenue

Hammer Field (playing field and playground) 46 Church Street

Lion's Park Burban Drive

Madera Park, Thimble Island Road

Pagano Park Beckett Ave. Short Beach

Pardee Park Taylor Place, Short Beach

Parker Memorial Park (park and playground) Harbor Street

Patty's Park Perish Farm Road (behind Murphy School)

Riverside Foote Park, (park) Pine Orchard Road

Samson Field (playing field) Melrose Avenue

Sliney Field (playing field) South Montowese Street

Supply Pond, (park) Short Rocks Road

Veterans Memorial Park (playing field, playground) Brushy Plain Road

West Point Field West Point Road

Young's Pond (playing field, park) Rte. 146 Pine Orchard

Road/Blackstone Avenue

## **WALKING TRAILS**

### **Branford Land Trust**

(203) 483-5263

Walking trails, land preservation and outdoor programs throughout Branford.

<https://branfordlandtrust.org/>

### **Shoreline Greenway Trail**

<https://shorelinegreenwaytrail.org/>

## **SPORTING TEAMS**

### **Branford Recreation Department**

203.488.8304

46 Church Street Branford, CT 06405

*Programs for children and adults in a new state-of-the-art building!*

Exercise and aquatics classes, camp, music, toddler classes. Adult classes, Sports, clinics, swim lessons, Tai Kwon Do and much more.

[www.branfordrecreation.org](http://www.branfordrecreation.org)

### **Branford Little League**

<http://www.branfordlittleleague.net/>

### **Branford Soccer**

[www.branfordsoccer.org](http://www.branfordsoccer.org)

### **Girls Softball**

<http://branfordgirlssoftball.sportssignup.com/site/>

### **Junior / Travel Basketball**

**Joe Chandler**

203.488.4877

### **Youth Cheerleading**

[www.branforyouthfootball.org](http://www.branforyouthfootball.org)

### **Youth Lacrosse**

[www.branfordlacrosse.com](http://www.branfordlacrosse.com)

### **Youth Football**

[www.branforyouthfootball.org](http://www.branforyouthfootball.org)

## COMMUNITY SERVICE/VOLUNTEER OPPORTUNITIES

**Boy Scouts of America, CT Yankee Council** 1.800.333.7905  
60 Wellington Road Milford, CT 06460  
[www.ctyankee.org](http://www.ctyankee.org)

**Branford Animal Shelter/Control** 203. 315.4125  
749 East Main Street Branford, CT 06405  
[www.branfordanimalshelter.org](http://www.branfordanimalshelter.org)

**Branford Cares** 203.488.2681  
*Branford Cares is a community-wide response to help provide for the needs of Branford residents.*  
[www.branfordcares.org](http://www.branfordcares.org)

**Branford Early Childhood Collaborative** 203.415.5237  
P.O. Box 1032 Branford, CT 06405  
[www.branfordbecc.org](http://www.branfordbecc.org)

**Branford Food Pantry** 203.481.3663  
[www.branfordfoodpantry.org](http://www.branfordfoodpantry.org)

**Branford Recreation Department** 203.488.8304  
46 Church Street Branford, CT 06405  
[www.branfordrecreation.org](http://www.branfordrecreation.org)

**Branford Lions Club** 203.640.9329  
P.O. Box 406 Branford, CT 06405

**Branford Rotary Club**  
[info@branfordrotary.org](mailto:info@branfordrotary.org)

**Branford Summer Meals Program** 203.315.6741  
[www.branfordschools.org](http://www.branfordschools.org) or [www.ctsummermeals.org](http://www.ctsummermeals.org)

**Canoe Brook Senior Center** 203.481.3429  
46 Church Street Branford, CT 06405

**Community Dining Room** 203.488.9750  
[www.communitydiningroom.org](http://www.communitydiningroom.org)

## COMMUNITY SVC/VOLUNTEER OPPORTUNITIES (CON'T)

**Connecticut Hospice** 203.315.7510  
100 Double Beach Road Branford, CT 06405 [www.hospice.com](http://www.hospice.com)

**Girl Scouts, CT Trails Council** 203.239.2922  
20 Washington Avenue North Haven, CT 06473 1.800.922.2770  
[www.gsofct.org](http://www.gsofct.org)

**Interfaith Volunteer Caregivers of Greater New Haven** 203.230.8994

**Integrated Refugee and Immigrant Services (IRIS)** 203.562.2095  
235 Nicoll Street 2nd Floor New Haven, CT 06511 [www.irisct.org](http://www.irisct.org)

**James Blackstone Memorial Library** 203.488.1441  
758 Main Street Branford, CT 06405 [www.blackstone.lioninc.org](http://www.blackstone.lioninc.org)

**Orchard House** 203.481.7110  
421 Shore Drive Branford, CT 06405 [www.theorchardhouse.org](http://www.theorchardhouse.org)

**Patricia Andriole Volunteer Services Center** 203.483.2643  
30 Harrison Avenue Branford, CT 06405  
Clothing Bank/ BH Care *Open~ Monday-Thursday 9:30AM-2:00PM,  
Friday 9:30AM-1:00PM Saturday 11:00AM-1:00PM*  
[www.bhcare.org](http://www.bhcare.org)

**Sarah Inc.** 860.399.1888  
1620 Boston Post Rd. Suite 200, Westbrook, CT 06498  
Serving the differently abled. [www.sarah-inc.org](http://www.sarah-inc.org)

**Soundview Family YMCA** 203.481.9622  
628 East Main Street Branford, CT 06405  
[www.soundviewymca.org](http://www.soundviewymca.org)

**Special Olympics of CT** 203.230.1201  
2666 State Street Hamden, CT 06514  
[www.soct.org](http://www.soct.org)

**Willoughby Wallace Memorial Library** 203.488.8702  
146 Thimble Islands Road, Branford, CT 06405  
[www.wtml.org](http://www.wtml.org)

## **BRANFORD SUMMER CAMPS**

### **Branford Evangelical Free Church**

203.488.1885

Mary T. Murphy School

14 Brushy Plains Road Branford, CT

*Week long "Sports & Art Camp" Art, Basketball, cheerleading, football, soccer and team 45 (movement skills for children 4 & 5 years old.)*

[www.branfordefc.com](http://www.branfordefc.com) Email~ [questions@branfordefc.com](mailto:questions@branfordefc.com)

### **Branford Land Trust**

203.483.5263

P.O. Box 254 Branford, CT 06405

#### **Hands-on the Environment Day**

*This Environmental Day Camp is held annually for children ages 5-9 at the Killam's Point Conference Center in Branford. Providing activities, presentations and games that help kids learn about tide pools, woodland habitats, wildlife rehab, recycling, and nature storytelling.*

[info@branfordlandtrust.org](mailto:info@branfordlandtrust.org)

### **Branford Parks and Recreation Department**

203.488.8304

Summer and sports camp and activities. Kindercamp, Teen Travel, school age, tennis, baseball, volleyball, field hockey, lacrosse, basketball.

[www.branfordrecreation.org](http://www.branfordrecreation.org)

### **Camp Invention**

203.550.4459

*Two one week sessions of science camp. Held at an elementary school during the month of July. Children are presented with fun, hands-on challenges that encourage creative problem solving, teamwork, entrepreneurship, and innovation. Camp invention is led by experienced local educators and new curriculum is introduced each year, inspired by the Inductees of the National Inventors Hall of Fame! For more information call Kattie Konno-Leonffu, Camp Invention Director [kleonffu@gmail.com](mailto:kleonffu@gmail.com)*

### **First Congregational Church of Branford**

203.488.7201

*The FCC of Branford offers a yearly summer camp program for ages 5-12. Teens ages 13-15 are eligible to volunteer to be Junior Counselors. Morning snack provided. Visit the website for more information.*

[www.firstcongregationalbranford.org/](http://www.firstcongregationalbranford.org/)

### **Learn & Play Christian Early Learning Center Camp**

203.488.4028

811 East Main Street Branford, CT

[www.learnandplaychristian.org](http://www.learnandplaychristian.org)



## **BRANFORD SUMMER CAMPS (CON'T)**

**School Aged Child Care – Summer Program** 203.481.5066  
Walsh Intermediate School 185 Damascus Rd. Branford, CT  
*Available for children who have completed kindergarten through grade 8*

**Soundview Family YMCA Day Camp** 203.481.-9622  
*Ages 3-5 Kiddie Camp and traditional YMCA summer camp available for 5 and older. [www.soundviewymca.org](http://www.soundviewymca.org)*

**Tabor Christian Community Preschool** 203-483-9420  
45 Tabor Drive Branford, CT 06405  
*Multi-age summer program. Call for more information.*

**Tabor Arts Branford** 203.488.5668  
45 Tabor Drive Branford, CT 06405  
*Musical theater programs throughout the year.*

**Vacation Bible School at Killam's Point** 203.488.7201  
*Killam's Point Conference Center covers approximately 55 acres and is a quiet refuge of undisturbed woodland, salt marsh, and rocky tidal area. It is available to educational and non-profit groups as well as churches. [www.firstcongregationalbranford.org/vacationbibleschool.html](http://www.firstcongregationalbranford.org/vacationbibleschool.html)*

## **SUPPORT GROUPS**

*(Please contact individual groups to ensure the program is in session)*

### **Branford Support Groups**

*This site offers a variety of support groups for adults, adolescents and children in many different areas.*

<https://uwc.211ct.org/support-groups/>

### **CT BHP Supporting Health and Recovery**

*This site has much information and many support groups for individuals, families and children.*

[www.ctbhp.com/docs/DCF\\_Greater\\_New\\_Haven.pdf](http://www.ctbhp.com/docs/DCF_Greater_New_Haven.pdf)

### **CT Family Support Groups**

877.376.2329

*This group helps families with children of special healthcare needs and disabilities. They offer over 20 support groups around CT, workshops and trainings and one on one help. All services are free. [www.ctfsn.org](http://www.ctfsn.org)*

## **SUPPORT GROUPS (CON'T)**

### **CT Hospice Support Groups**

203.315.7544

*Groups are offered for families who have suffered losses of loved ones at hospice, hospitals or home. New groups offered periodically, including daytime & evening, serving widows and widowers, adults grieving the death of a parent, or those who have lost a family member, a partner, or a friend. Registration is required for all groups. For more information, please call the Bereavement Office.*

### **Epilepsy Foundation of CT**

860-346-1924

386 Main Street Middletown, CT 06457-3360

*Offering support groups for parents and caregivers of children with epilepsy to talk about the challenges, fears, and coping tactics in caring for a child with epilepsy. Meets the fourth Wednesday of each month at St. Therese Church Parish Center 105 Leetes Island Rd.*

### **Family Centered Services of CT-Parenting Programs**

*This program provides parenting education and support on relationship building, attachment, discipline, and co-parenting for free.*

Contact: 203-624-2600 or [familyct.org](http://familyct.org)

### **Food Allergy Friends & Parent Group**

203.415.5613

*Food Allergy Friends Youth & Parent/Caregiver Support Group is a monthly in-person support program that educates, empowers, and helps children and parents/caregivers lead safe yet fulfilling lives despite the challenges presented by living with food allergies. Currently meeting the third Monday of each month from 6pm-7pm at the **Women and Family Life Center** in Guilford, CT. For more information, visit the website.*

<https://www.branfordbecc.org/support-groups.html>

### **Women and Family Life Center**

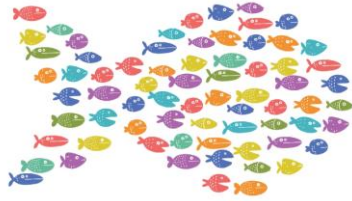
203.458.6699

96 Fair St., Guilford, CT

<https://womenandfamilylife.org/>

*The Kids HUGS (Hope, Understanding, Growth, and Support) program offers support for families that have a parent coping with a serious illness or chronic disease. Women and Family Life Center hosts a variety of groups for women such as a Mom's breastfeeding group, divorce, Girls Coach Girls Run, Food Allergy support groups and more. Please visit their website or call for more information.*

# Connecticut Children's Collective



*A proud partner in The Connecticut Children's Collective.  
A state-wide network of local partnerships creating positive outcomes for  
Connecticut's children and families. Local leaders, parents, educators,  
and providers know best what works in their community, and working  
together can dramatically improve outcomes for all Connecticut's  
children.*

[www.ctchildrenscollective.org](http://www.ctchildrenscollective.org)



203.415.5237  
[www.branfordbecc.org](http://www.branfordbecc.org)

 Visit us on Facebook